

# Unique Potential to be the LARGEST Organic Rock Phosphate (a US 2025 Critical Mineral) Property in North America



"The scale and stratiform nature of the phosphate beds in the Leach Mountain Range for which Nevada Organic Phosphate has made lease applications is such that they can be rapidly demonstrated as a potential world class long lived supply of organic phosphate worth billions which the market may quickly price into the stock ahead of a buyout by a fertilizer major."

John Kaiser, Kaiser Watch  
January 15, 2026

### Independent Third Party External Commentary (Not NI 43 101 Disclosure)

- This statement represents the personal opinion of the commentator and is not endorsed by NOP.
- This commentary is not NI 43 101 compliant technical disclosure and has not been reviewed by a Qualified Person.
- The Company has not defined a mineral resource and no economic analysis has been completed. Potential quantity, grade, and economic outcomes are conceptual in nature.
- This slide contains forward looking information subject to risks and uncertainties; actual results may differ materially.

## 100% ORGANIC FERTILIZER, RAW ROCK PHOSPHATE

- Just listed as a US Critical Mineral
- NO large scale competition in North America
- NO Contamination to the ground, ground-water, lakes, and rivers
- NO Processing required other than grinding and bagging
- Just spread it directly on farmers' fields
- REGENERATIVE - works with the natural bacteria in the soil with Carbon Capture at the same time



Nevada is  
a politically  
safe, mining  
friendly jurisdiction

## MURDOCK PROJECT

- ET of 10 to 46 million tonnes of rock phosphate, grade ranging from 3-15%  $P_2O_5$ . (ET: This term is used to describe a potential resource before sufficient exploration has been conducted to define it as a formal mineral resource - estimation based on an average thickness of 3.5 meters and a specific gravity of 2.61)
- NEW Targets - 3 additional target areas have been identified, which bring the total ET potential to 200-220 million tonnes of rock phosphate
- Low capex model - break it up, dig it up, grind it up, bag it up and ship it out!
- Massive Addressable Market

## PROJECT POTENTIAL

- The Murdock Property is a nearly flat lying sedimentary rock phosphate exploration target
- Initial 1,813-acre Permit area is believed to host a potential Exploration Target (ET) of 10 to 46 million tonnes ranging in grade from 3-15%  $P_2O_5$  based on an average thickness of 3.5 metres and a specific gravity of 2.6<sup>1</sup>
- This geological model and historic data predict our 3 additional applications, totaling 6,011 acres, add up to an additional ET of 200-220 million tonnes of  $P_2O_5$  exploration potential<sup>2</sup>
- The Murdock Property Permit and new Applications are subject to on-going environmental impact assessments (EIAs) and mitigation strategies guided by the National Environmental Policy Act (NEPA)

- 1 These ranges are based on previous workers and researchers estimates and have not been verified by NOP according to current 43-101 standards of disclosure
- 2 The reader is cautioned that the ET potential quantity and grade is conceptual in nature, there has been insufficient exploration to define a mineral resource, and it is uncertain if further exploration will result in the target being delineated as a mineral resource.

## EXPLORATION & PERMITTING

- Drilling resumes April-May once winter conditions clear and ground access improves
- Major milestone: complete drilling across 6.6 km strike length and release results
- All known strike extensions secured across three additional Permit areas; prospecting and Environmental Assessments underway
- Ongoing collaboration with BLM, NDOW, and environmental consultants to ensure full compliance and protection of habitat and wildlife, including sage grouse
- Upcoming milestones in New Areas:
  - Confirm phosphate-bearing outcrops, Plan follow-up drilling
  - Advance habitat protection and mitigation strategies to support permitting



Charts by [TradingView](https://www.tradingview.com)

## THE ELEMENT PLANTS CAN'T LIVE WITHOUT

- Stimulates early growth and root formation
- Necessary for cell division and DNA and RNA formation
- Improves the ability of plants to absorb water and other nutrients
- Stimulates flower blooms and seed development
- Improves plant strength and the ability to tolerate unfavorable environmental conditions
- Aids in photosynthesis and food formation

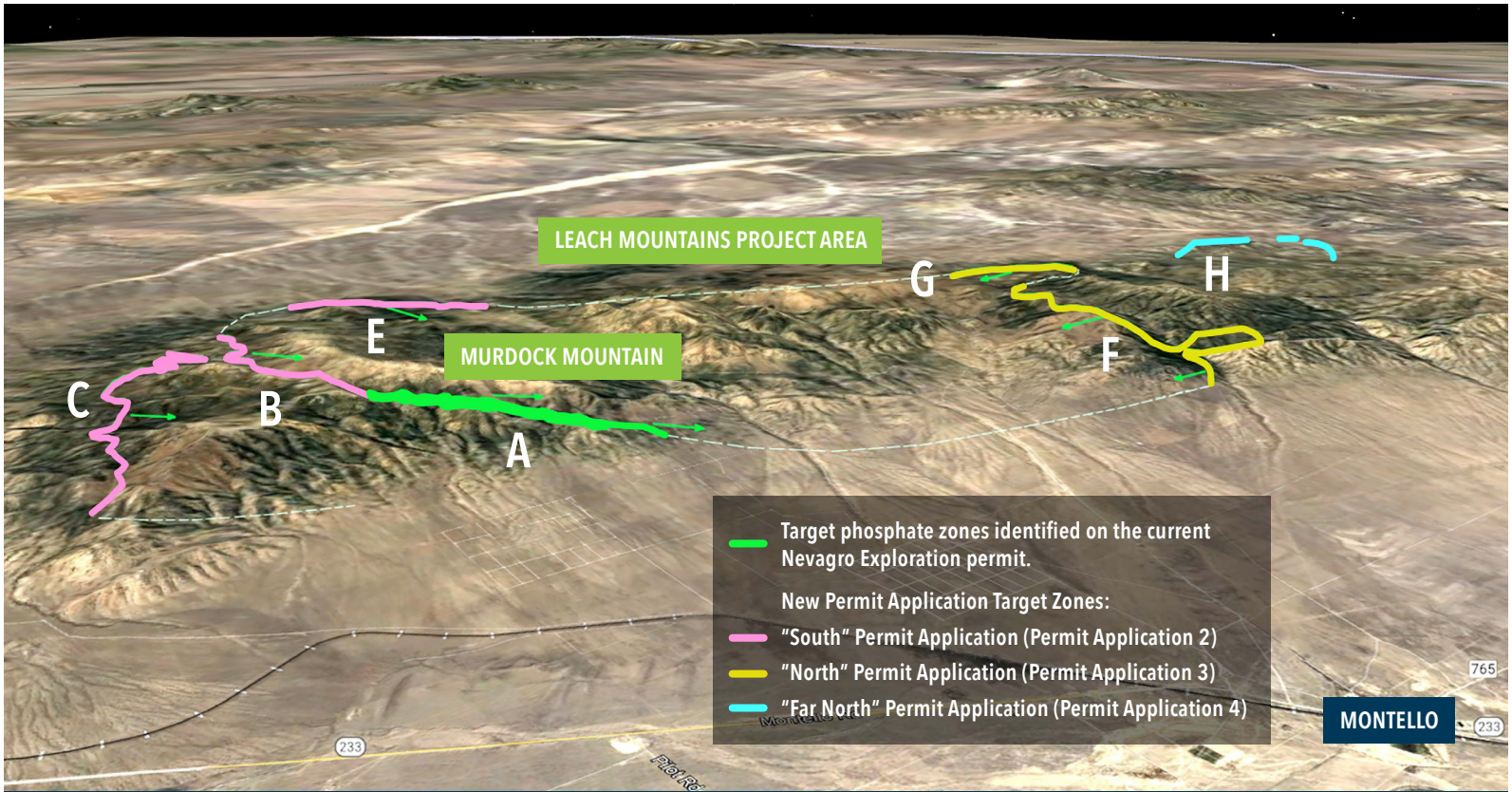
PHOSPHORUS IS A  
**MACRO  
NUTRIENT**



# NOP 2026 DRTILLING

## NEW Targets

3 Additional target areas have been identified, which bring the total ET potential to 200-220 million tonnes of rock phosphate





# 2025/2026 DRILLING

## Share Capital

Unaudited as at June 6, 2026

Total issued and outstanding common shares

178,923,541

Total options outstanding

14,224,000

Total warrants outstanding

54,150,247

Total issued and outstanding - Diluted

247,297,788

The technical information in this handout has been reviewed and approved by Garry K Smith, P.Geo., a Qualified Person as defined in "National Instrument 43-101, Standards of Disclosure for Mineral Projects."

