

# Unique Potential to be the LARGEST Organic Rock Phosphate (a US 2025 Critical Mineral) Property in North America



Not all phosphate rocks  
are created equal.

## At MURDOCK MOUNTAIN IT'S CLEAN

- Insignificant impurities, well below organic fertilizer certification
- Only 5% of world's application of  $P_2O_5$  is pure enough to be applied as direct application, raw rock phosphate
- No processing required to remove impurities or upgrade rock quality
- Limestone hanging/footwalls are calcite-rich
- P occurs as "francolite", the most reactive crystallite structure of all  $P_2O_5$  minerals

## 100% ORGANIC FERTILIZER, RAW ROCK PHOSPHATE

- Just listed as a US Critical Mineral
- NO large scale competition in North America
- NO Contamination to the ground, ground-water, lakes, and rivers
- NO Processing required other than grinding and bagging
- Just spread it directly on farmers' fields
- REGENERATIVE - works with the natural bacteria in the soil with Carbon Capture at the same time



Nevada is  
a politically  
safe, mining  
friendly jurisdiction

## MURDOCK PROJECT

- ET of 10 to 46 million tonnes of rock phosphate, grade ranging from 3-15%  $P_2O_5$ . (ET: The potential quantity and grade is conceptual in nature. There has been insufficient exploration to define a mineral resource and it is uncertain if further exploration will result in the target being defined as a mineral resource.)
- NEW Targets - 3 additional target areas have been identified, which bring the total ET potential to 200-220 million tonnes of rock phosphate
- Low capex model - break it up, dig it up, grind it up, bag it up and ship it out!
- Massive Addressable Market

## PROJECT POTENTIAL

- The Murdock Property is a nearly flat lying sedimentary rock phosphate exploration target
- Initial 1,813-acre Permit area is believed to host a potential Exploration Target (ET)<sup>1</sup> of 10 to 46 million tonnes ranging in grade from 3-15% P<sub>2</sub>O<sub>5</sub> based on an average thickness of 3.5 metres and a specific gravity of 2.6<sup>2</sup>
- This geological model and historic data predict our 3 additional applications, totaling 6,011 acres, add up to an additional ET of 200-220 million tonnes of P<sub>2</sub>O<sub>5</sub> exploration potential<sup>1</sup>
- The Murdock Property Permit and new Applications are subject to on-going environmental impact assessments (EIAs) and mitigation strategies guided by the National Environmental Policy Act (NEPA)

- 1 ET: The potential quantity and grade is conceptual in nature. There has been insufficient exploration to define a mineral resource and it is uncertain if further exploration will result in the target being defined as a mineral resource.
- 2 These ranges are based on previous workers and researchers estimates and have not been verified by NOP according to current 43-101 standards of disclosure.

## EXPLORATION & PERMITTING

- Drilling resumes April-May once winter conditions clear and ground access improves
- Major milestone: complete drilling across 6.6 km strike length and release results
- All known strike extensions secured across three additional Permit areas; prospecting and Environmental Assessments underway
- Ongoing collaboration with BLM, NDOW, and environmental consultants to ensure full compliance and protection of habitat and wildlife, including sage grouse
- Upcoming milestones in New Areas:
  - Confirm phosphate-bearing outcrops, Plan follow-up drilling
  - Advance habitat protection and mitigation strategies to support permitting



## THE ELEMENT PLANTS CAN'T LIVE WITHOUT

- Stimulates early growth and root formation
- Necessary for cell division and DNA and RNA formation
- Improves the ability of plants to absorb water and other nutrients
- Stimulates flower blooms and seed development
- Improves plant strength and the ability to tolerate unfavorable environmental conditions
- Aids in photosynthesis and food formation

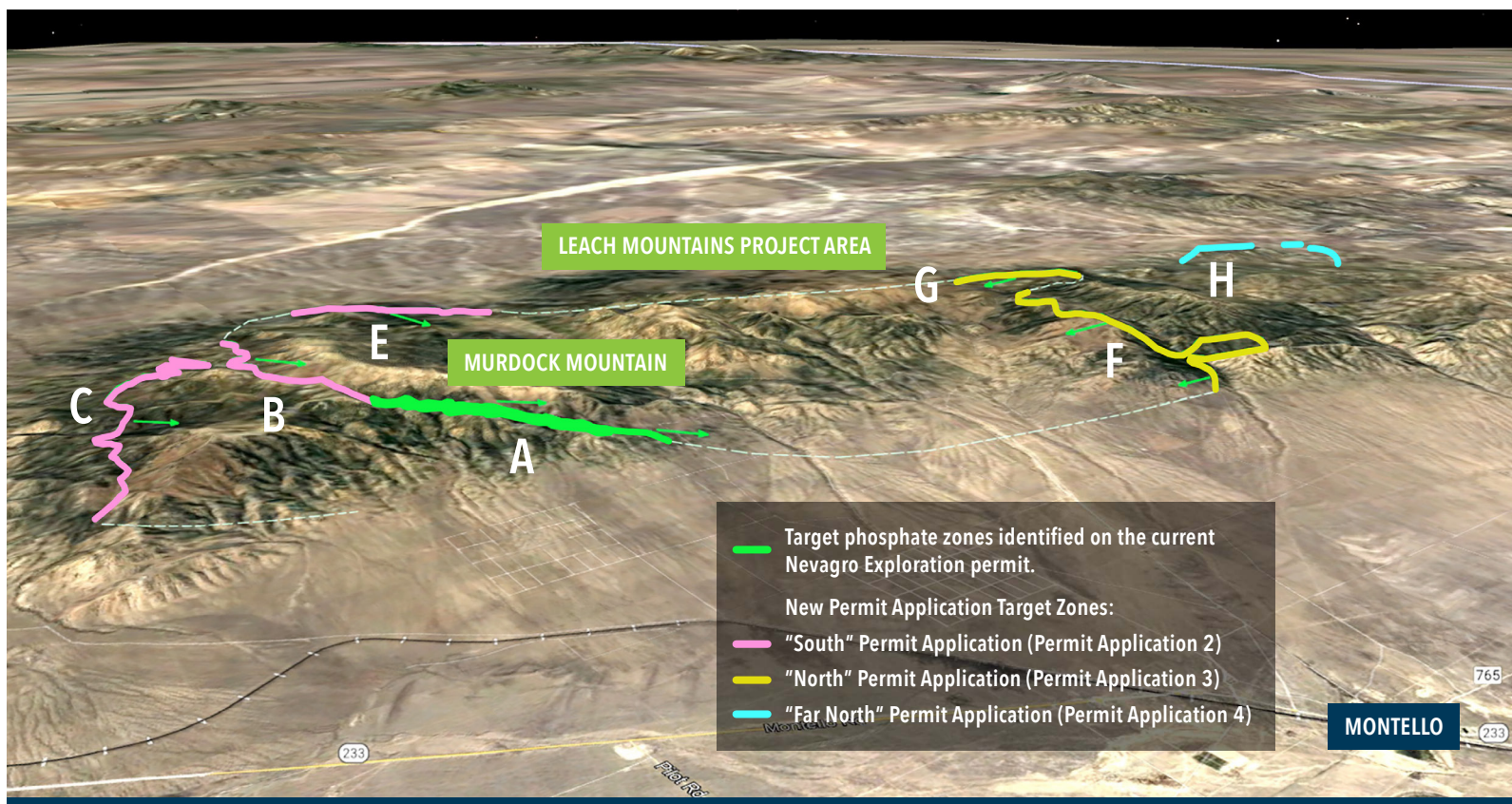
PHOSPHORUS IS A  
**MACRO  
NUTRIENT**



# NOP 2026 DRILLING

## NEW Targets

3 Additional target areas have been identified, which bring the total ET potential to 200-220 million tonnes of rock phosphate





## Share Capital

Unaudited as at June 6, 2026

Total issued and outstanding common shares

178,923,541

Total options outstanding

14,224,000

Total warrants outstanding

54,150,247

Total issued and outstanding - Diluted

247,297,788

The technical information in this handout has been reviewed and approved by Garry K Smith, P.Geo., a Qualified Person as defined in "National Instrument 43-101, Standards of Disclosure for Mineral Projects."

